



# Import of the LTGRCA2 certificate into the Windows Trust store

## User Guide

V 1.0

**22/01/2016**  
English

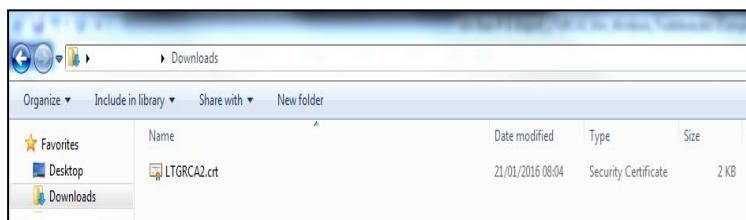
## Disclaimer

This document may not be reproduced as a whole or parts of it without the prior written and explicit consent of LuxTrust S.A. Third party copyrights may exist for parts of this documentation. LuxTrust S.A. declines all responsibility for direct, indirect, special, incidental or consequential damages to hardware or other damages somehow related to or resulting from the execution of any advice given in this document. This document is provided “as is” and no provision is made in terms of fitness for a particular purpose or applicability. By making use of this document the user accepts using it to its own risk and understands that this document could not be provided without such limitations.

## I Download the LTGRCA2 certificate

Please download the root certificate via the following link  
<https://ca.luxtrust.lu/LTGRCA2.crt>  
and save it for example to your “Downloads” folder.

The File has to be imported later into the Microsoft Certificate Store on your computer.



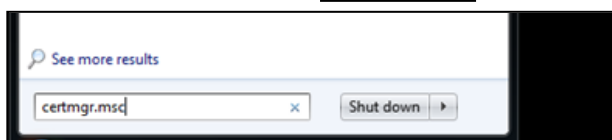
## II Import the certificate

Click the Windows “Start” button in the left side of your screen.



Enter in the search field the following request:

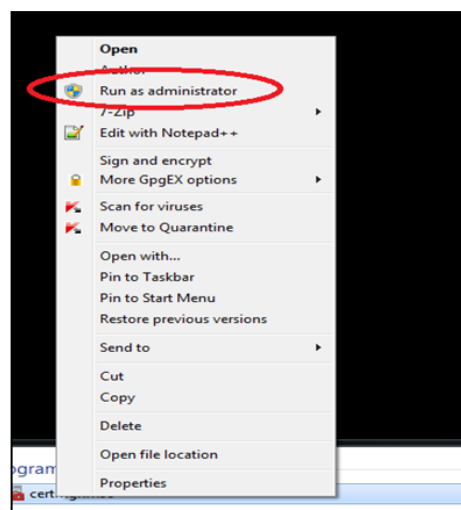
**certmgr.msc**



Once you have entered your request, you will see under “Programs”: certmgr.msc

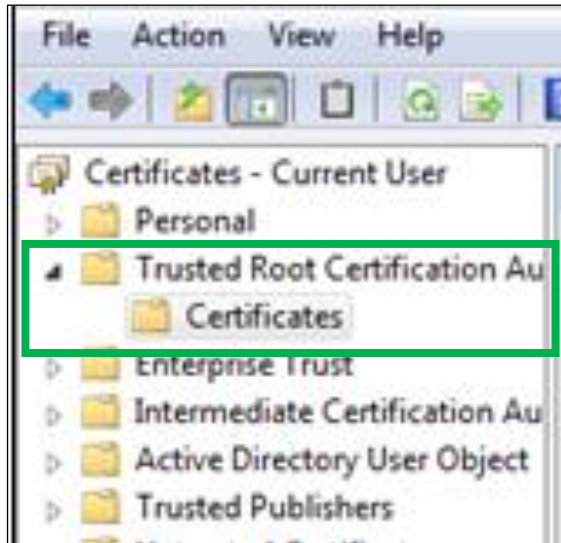


Click with the right mouse button and select the menu “Run as administrator”.

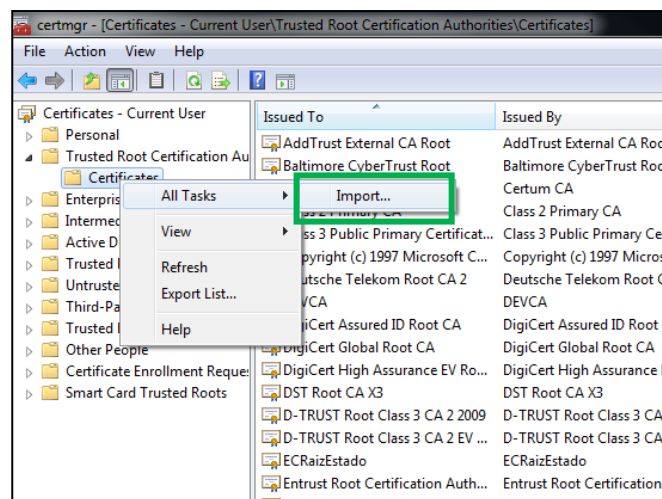


Within the new windows, please select “Trusted Root Certification Authorities” and then “Certificates”.

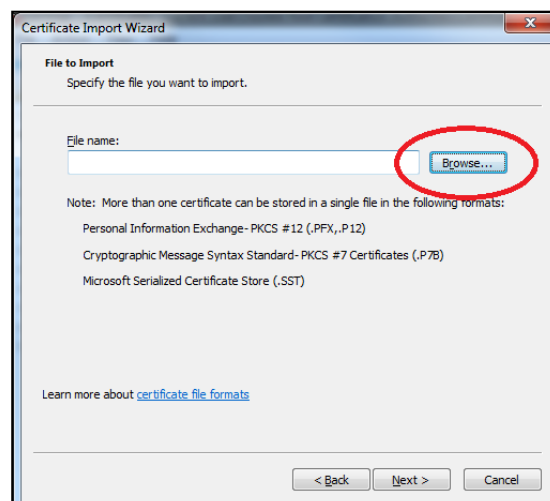
Now you’ll see the currently imported certificates.



Make a Right-Click on “Certificates”, then select “All Tasks” and finally “Import” in order to import the file.

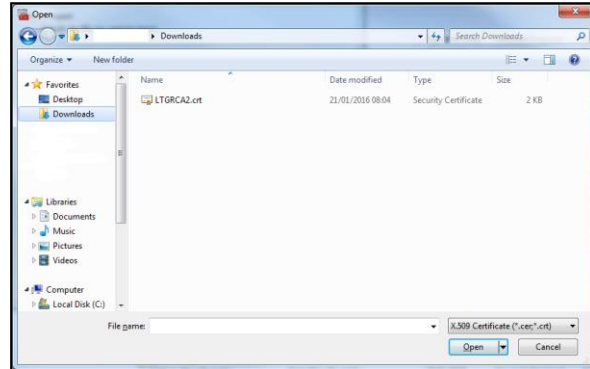


On the next window, please click the button “Browse...”

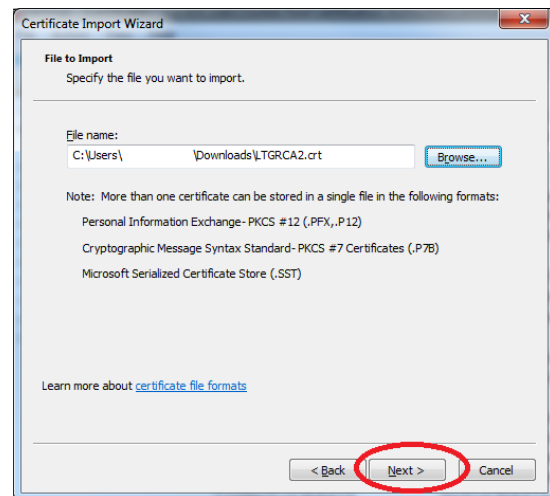


Go to the folder to which you have downloaded the file with the certificate at the beginning, e.g. Downloads.

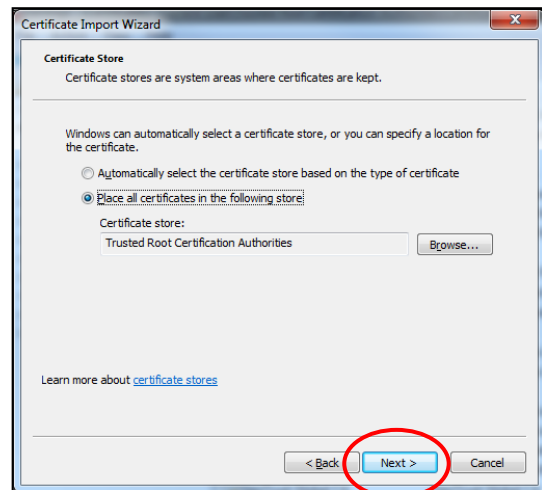
Select the file “LTGRCA2.crt” and click on “Open”.



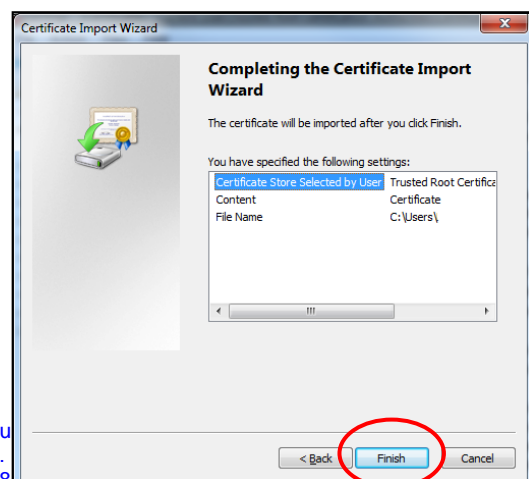
Please click the “Next” button on the following window.



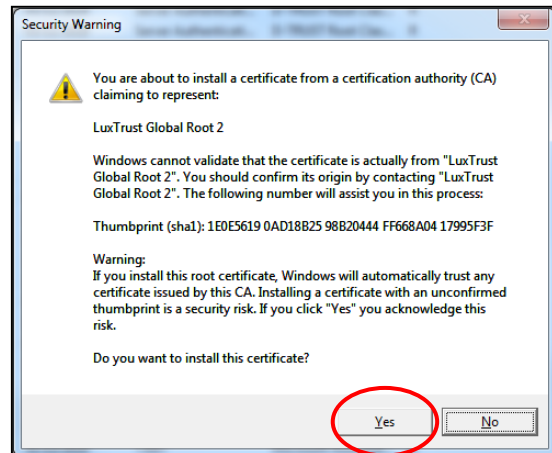
Within the next window, please select the option “Place all certificates in the following store” and then click “Next”.



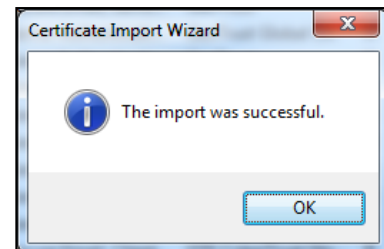
The next and final window will provide a summary of the actions performed so far and by clicking “Finish” the import process starts:



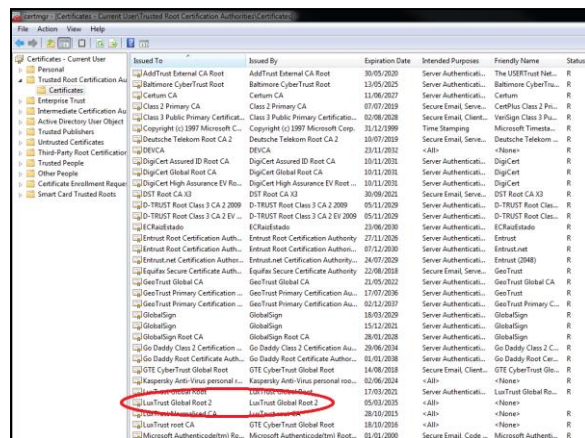
Before the import can be terminated, a “Security Warning” appears. Please confirm with “Yes”.



When the import was successful, the following window will appear:



Finally the imported certificate “LuxTrust Global Root 2” will appear in the list.



**Important information:**

Please close the application **certmgr** by clicking on the cross (X) on the right top of the application after the certificate has been imported successfully.

If the application has not been closed properly, other users will have the possibility to import any other certificate on your computer.